

Model 9623

EV Leak Rate Monitor



The Model 9623-EV is a revision built from an industry proven design. The EV can function with no power source by utilizing an internal internal air/electric generator. This unit has three flow ranges and one pressure channel. The 9623-EV quantifies the component's leakage rate by maintaining a constant gas pressure against the barrier being tested while measuring the gas flow rate needed in order to maintain that pressure constant.

Using three ranges, a 1000 to 1 turn-down ratio is achieved with a 1% of full scale accuracy over each of the three ranges. Each flow range is customer selectable. Full scale flow ranges up to 400 slpm may be ordered. This same unit may also be used to perform temperature compensated pressure decay tests on large volumes.

● SPECIFICATIONS ●

High Accuracy Pressure Regulator

Maximum Inlet Pressure: 250 PSIG

Regulated Test Pressure: 5 to 140 PSIG

Ruggedized Color Touch Screen Display

7" Widescreen, 800 x 480 pixel

Three Flow Ranges

Laminar element flow meters

Full Scale of 212 SCFH

10 to 1 Turn-Down Ratio Recommended

Accuracy: 1% of Full Scale

Repeatability: 0.5% of Full Scale

Max Pressure: 150 PSIG

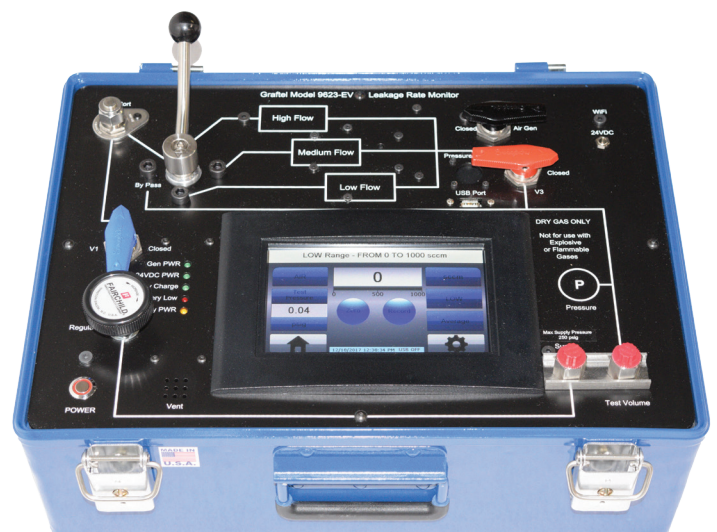
Pressure

Full Scale: 140 PSIG

Accuracy: 0.25% of Full Scale

Power

24 VDC wall power supply,
internal battery or internal air/electric
generator



Model 9623-EV Leak Rate Monitor



Electronic Power Generators: Internal electric air powered generator allows for unlimited operation without external power

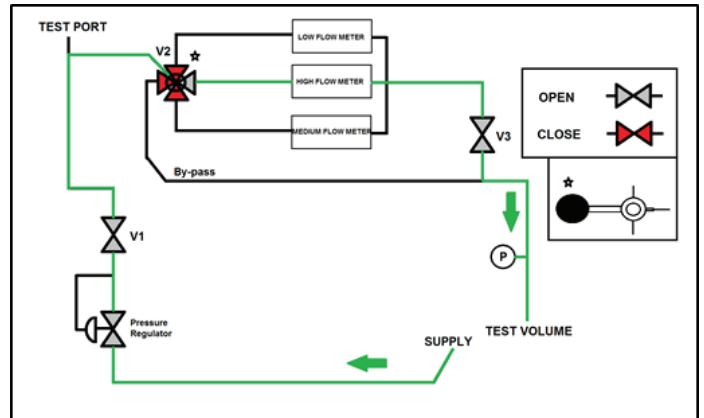
USB Data Capture: Touch screen enables user to save test data on a USB flash-drive

Customized Data Recording Options: The test data file name can be customized by the user to indicate the valve number/ test location and the initials of the tester. These custom file names can be manually entered through the touchscreen or uploaded onto the permanent memory of touchscreen using a USB flash drive

Re-Calibration: The 3 flow meters and the two pressure gauges can also be re-calibrated and adjusted through the touch-screen interface

Pressure Decay Testing: Extreme accuracy optional absolute pressure transmitter for pressure decay testing large volumes such as airlocks and purge valves

Diagnostic Check: New color touchscreen program enables the user to run diagnostics on all flow and pressure sensors



OPTIONAL EQUIPMENT

WiFi: An on-board Wi-Fi radio allows the user to control the LRM touchscreen on a LAN connected PC. The wirelessly transmitted LRM data can be seen and saved real-time on the PC.

Automated Calibration: Using the Compass software along with a flow standard such as the Fluke molbocs, the user has the ability to perform a full calibration of the 9623-EV leak rate monitor.

Accessories:

Battery Pack
Check Nozzles
Supply Air Conditioner/Pre Regulator

